



## QUICK START GUIDE









## QUICK START GUIDE

## Notes and Cautions

 **NOTE:** A NOTE indicates important information that helps you make better use of your computer.

 **CAUTION:** A CAUTION indicates either potential damage to hardware or loss of data and tells you how to avoid the problem.

---

**Information in this document is subject to change without notice.**

**© 2009 Dell Inc. All rights reserved.**

Reproduction of these materials in any manner whatsoever without the written permission of Dell Inc. is strictly forbidden.

Trademarks used in this text: *Dell*, the *DELL* logo, and *YOURS IS HERE* are trademarks of Dell Inc.; *Ubuntu* and the *Ubuntu* logo are registered trademarks of Canonical Ltd.

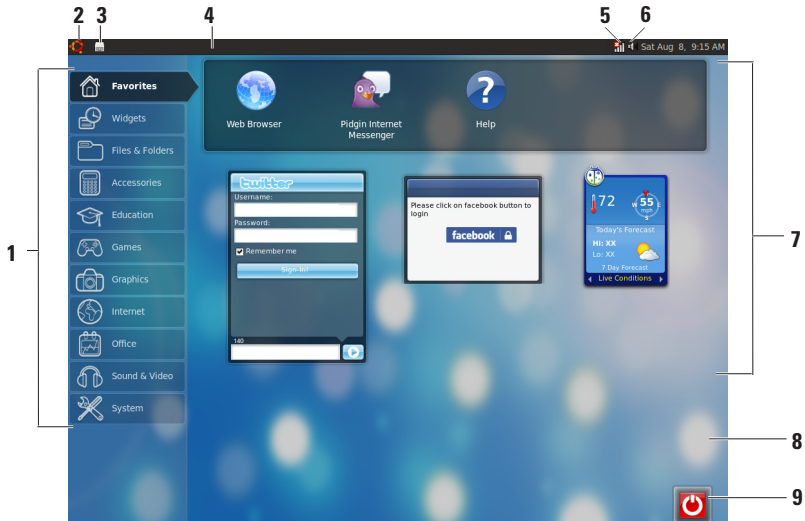
Other trademarks and trade names may be used in this document to refer to either the entities claiming the marks and names or their products. Dell Inc. disclaims any proprietary interest in trademarks and trade names other than its own.





# Contents

<b>About Your Ubuntu Netbook Desktop . . . . .</b>	<b>4</b>
Main Menu . . . . .	6
<b>Getting Started With Ubuntu. . . . .</b>	<b>8</b>
Connecting to the Internet . . . . .	8
Browsing the Internet . . . . .	9
Instant Messaging . . . . .	12
Creating Files and Folders . . . . .	12
Transferring Data . . . . .	16
Setting System Preferences . . . . .	16
Switching to the Classic Desktop Mode . . .	18
Basic Ubuntu Shortcuts . . . . .	19
<b>Reinstalling Your Operating System . . . . .</b>	<b>20</b>

# About Your Ubuntu Netbook Desktop

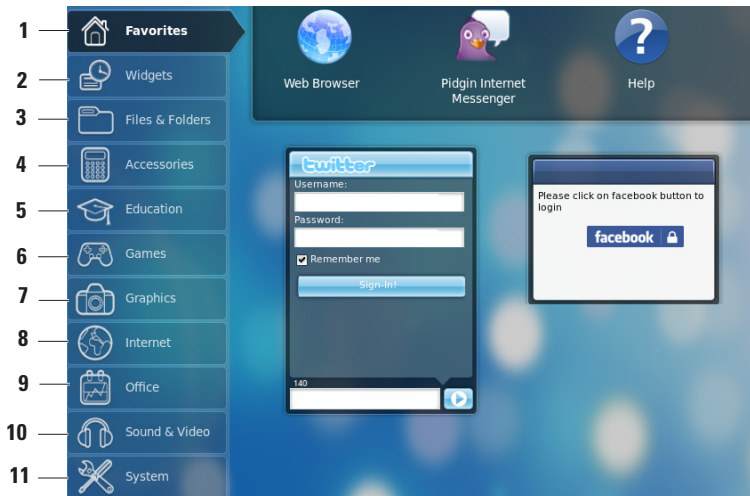
The Ubuntu Netbook Desktop launches when you turn on your computer.




- 1 Main Menu** — Provides access to applications and settings on your computer. Click the desired category to view the available applications and settings. For more information, see “Main Menu” on page 8.
- 2  Home icon** — Click to minimize all open windows and to display the main menu.
- 3 Running application icon** — Each running application is represented by an icon in the panel. Click the running application to bring it to the foreground.
- 4 Panel** — Provides quick access to running applications and utilities on your computer.
- 5  Network status indicator** — Indicates if you are connected to a wired or wireless network. Click to view the list of available wireless networks. When connected to a wireless network, the indicator displays a series of bars indicating the signal strength.
- 6  Volume icon** — Click to adjust the volume level, mute the sound, or change the volume settings. Adjust the slider to increase or decrease the volume level.
- 7 Application icons** — Displays the icons for the applications available within a category.
- 8 Desktop** — Right-click the desktop to change the desktop background.
- 9  Power icon** — Click to log out or shut down your computer.

# Main Menu

The main menu has categories of the different applications and settings on your computer.






- 1 Favorites** — Displays your favorite applications. To add an application to the **Favorites** category, right-click the application and click **Add to Favorites**.  
 For more information on Ubuntu, see the Ubuntu Help Center. To access the Help Center, click **Favorites**→ **Help**.
- 2 Widgets** — Displays applications that enable you to network with friends, watch popular videos, and get updates about the weather.
- 3 Files & Folders** — Allows you to view, create, organize, and search for files and folders.
- 4 Accessories** — Displays tools such as text editor, calculator, CD/DVD Creator, and so on.
- 5 Education** — Displays educational applications available on your computer.
- 6 Games** — Displays the games available on your computer.
- 7 Graphics** — Displays applications that capture, edit, and transfer photos and videos.
- 8 Internet** — Displays applications that you can use when connected to the Internet.
- 9 Office** — Displays word processing, spreadsheets, and presentation applications.
- 10 Sound & Video** — Displays applications that enable you to watch movies and listen to music.
- 11 System** — Displays applications that enable you to perform administrative tasks and change your computer settings.

# Getting Started With Ubuntu

## Connecting to the Internet

### Setting Up a Wireless Network

1. Click the network status indicator icon  on the panel.
2. Select **Wireless Networks**.
3. Follow the instructions on the screen to complete the setup.


### Setting Up a Wired Network

Connect the network cable to the network connector on your computer.

Certain network connections may require you to configure the IP address manually.

To configure your IP address manually:

1. Click **System** on the main menu.
2. Click **Network Tools** in the **Administration** subcategory.
3. Enter the IP address and the network information.

 **NOTE:** Contact your ISP or network administrator for the IP address and network information.

## Browsing the Internet

The web browser allows you to browse the Internet.

To open the web browser, click **Internet** on the main menu and then click the web browser icon.

## Tabbed Browsing

You can open multiple web pages within the same browser window.

To open a new tab:

1. Open the web browser.
2. Click **File**→ **New Tab** or press <Ctrl><T>.

To close a tab, click the **X** button on the tab or press <Ctrl><W>.

# Getting Started With Ubuntu

The screenshot shows a web browser window with the address bar displaying `http://support.dell.com/`. The page title is "Dell Support Home Page - Web Browser". The browser's menu bar includes "File", "Edit", "View", "History", "Bookmarks", "Tools", and "Help". The address bar also shows a search engine dropdown set to "Yahoo".

The website header features the Dell logo, navigation links for "Shop", "Support", and "Community", and a search bar. Below this is a secondary navigation bar with dropdown menus for "Drivers and Downloads", "Product Support", "Support by Topic", "Order Support", "Warranty Information", and "View All".

The main content area is titled "Welcome to Dell Support". On the left, there is a "Support Options" sidebar with a tree view containing "Support Home Page", "Drivers and Downloads", "Product Support", and "Support by Topic".

The central area is titled "Get started with Dell Support" and contains four main service cards:

- Drivers & Downloads:** "I'm looking for drivers and downloads." (Icon: CD with green arrow)
- Technical Support:** "I need to solve a technical problem." (Icon: Stethoscope and computer tower)
- Order Status:** "I'd like to check the status of my order." (Icon: Dell delivery van)
- Customer Service:** "I have received my order." (Icon: Service desk)

Each card has a blue plus icon in the bottom right corner. To the right of these cards is a "View My History" link.

At the bottom, there are sections for "Top Solutions" (with a "Hot Topics" link to "Resolve lock-ups or freezes on Studio XPS 13") and "Additional Resources" (with a "Search for My Problem" link to "Search Dell's extensive").

The browser's status bar at the bottom left shows "Done".

## Bookmarks

You can create, organize, and edit bookmarks in the web browser.

To create a bookmark:


1. Open the web browser.
2. To bookmark a page or a group of tabs:
  - Click **Bookmarks** → **Bookmark This Page** or press <Ctrl><D>.
  - Click **Bookmarks** → **Bookmark All Tabs**.
3. Type in the name of the bookmark.
4. To save the bookmark, select the folder from the drop-down menu or create a new folder.
5. Click **Done**.

To organize and edit your bookmarks, click **Bookmarks** → **Organize Bookmarks**.

## Adding Bookmarks to the Favorites Category


You can add website bookmarks to the **Favorites** category from within the web browser.

To add a bookmark to the **Favorites** category, open the web browser and use one of the following methods:

- Click **Bookmarks** → **Bookmark in Launcher**.
- Press <Ctrl><Shift><D>.
- Click the  icon.

### Instant Messaging

The Pidgin messaging client allows you to use multiple instant messaging accounts all at once.

Click **Internet** on the main menu, and then click the Pidgin icon . The **Buddy List** window appears.

If you are opening Pidgin for the first time, an **Accounts** dialog box prompts you to add accounts.

1. Click **Add** in the **Accounts** dialog box.
2. In the **Add Account** window, enter the required information and then click **Add**.
3. Click **Close** on the **Accounts** dialog box.

### Creating Files and Folders

The **Files & Folders** category in the main menu allows you to view, create, organize, and search for files and folders.

#### Creating a New Folder

To create a new folder:

1. Click **Files & Folders** on the main menu.
2. Browse to the desired folder.
3. Click **File**→ **Create Folder** or right-click and click **Create Folder**.
4. Name the folder and press <Enter>.

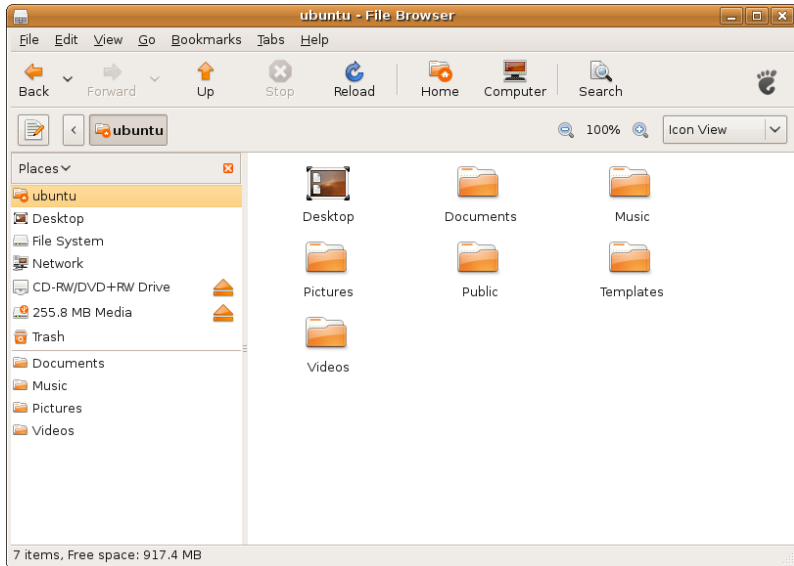
#### Adding Bookmarks

You can create bookmarks to access frequently-used folders.

To bookmark a folder:

1. Browse to the required folder and open it.
2. Click **Bookmarks**→ **Add Bookmark** or press <Ctrl><D>.

The bookmark appears in the **Bookmarks** menu.



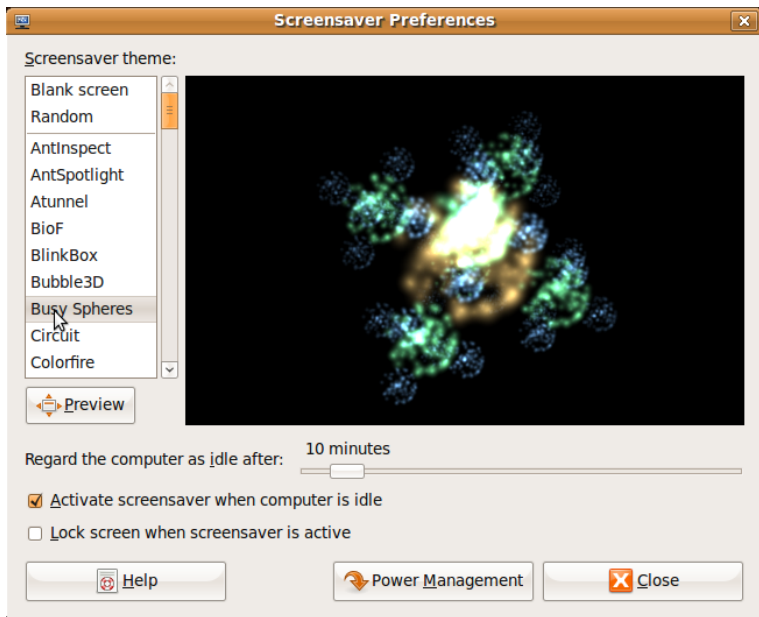
### Setting Screen Saver Preferences

To set the screen saver preferences:

1. Click **System** on the main menu.
2. Click **ScreenSaver** in the **Preferences** subcategory.  
The **Screensaver Preferences** window appears.
3. Select a screen saver of your choice from the **Screensaver theme** list.
4. Adjust the slider to set the duration that you want your computer to be idle before the screen saver appears.

5. Select the **Activate screensaver when computer is idle** check box.
6. If you want the screen saver to lock the screen, select the **Lock screen when screensaver is active** check box.
7. Click **Close**.





# Transferring Data

Ubuntu supports easy transfer of data from USB devices.

## USB Storage Devices

1. Connect storage devices such as USB hard drives or keys to an available USB connector on the computer.

The drivers are automatically installed and the **File Browser** window appears.

2. Select the files to be transferred and the location to transfer the files.
3. Click **Copy**. The files are transferred to the selected location.

## Digital Cameras

1. Connect your digital camera to an available USB connector on the computer.
2. Turn on the camera and place it in review or file transfer mode.

3. The **Import** window appears, choose **F-Spot Photo Manager** as the program to open your files.
4. Select the files to be transferred and the location to transfer the files.
5. Click **Copy**. The files are transferred to the selected location.

# Setting System Preferences

The **System** category provides or displays tools to control the appearance and operation of your computer.

The subcategories are:

- **Preferences** — for setting or changing the keyboard shortcuts, power management options, switching desktop mode, and so on.
- **Administration** — for managing computer tasks such as printing, setting the time and date, running tests on your computer hardware and so on.

## Installing or Removing Applications

To install or remove applications from your computer:

1. Click **System** on the main menu.
2. Click **Synaptic Package Manager** in the **Administration** subcategory.
3. Enter your password and click **OK**.
  - To install an application, select the check box adjacent to the required application.
  - To remove an application, clear the check box next to the required application.Some applications may require additional supporting applications or may be a part of a bundle. If you want to continue installing or removing the application, click **Install All/Remove All** in the confirmation window.

4. After you make the changes, click **OK**.
5. In the confirmation window, select the changes you have made and click **Apply**.  
Progress windows appear while downloading, installing, and removing applications. After the process completes, the **Changes Applied** window appears.
6. Click **Close**.

## Switching to the Classic Desktop Mode

To switch to the Classic Desktop:

1. Click **System** on the main menu.
2. Click **Switch Desktop Mode** in the **Preferences** subcategory.
3. Select **Classic Desktop** and click **Apply**.

To switch back to the Ubuntu Netbook Desktop:

1. Click **System** on the panel.
2. Click **Preferences** → **Switch Desktop Mode**.
3. Select **Ubuntu Netbook Desktop** and click **Apply**.

## Starting an Application in the Classic Desktop Mode

1. Click **Applications** on the panel.
2. Select the desired category and click the application you want to start.


## Adding or Removing an Application Icon on Your Classic Desktop

You can add an icon on your Classic Desktop for quick access.

1. Select an application in the **Applications** menu.
2. Drag and drop the application onto the Classic Desktop.

To remove an application icon from your Classic Desktop, right-click the application icon, and select **Move to Trash**.

## Basic Ubuntu Shortcuts

Shortcut	Action
	Click the icon to view the Ubuntu Netbook Desktop
<Alt><Tab>	Press the key combination to switch between applications
<Ctrl><Alt><D>	Press the key combination to minimize the active window
<Alt><F4>	Press the key combination to close a window
<Shift><Ctrl><N>	Press the key combination to create a new folder in <b>Files &amp; Folders</b>

For more information about shortcut keys in Ubuntu:


1. Click **System** on the main menu.
2. Click **Keyboard Shortcuts** in the **Preferences** subcategory.



**NOTE:** The following instructions are applicable to the Ubuntu Netbook Desktop view. They may not apply if you set your computer to the Classic Desktop view.

# Reinstalling Your Operating System

 **CAUTION:** Using the Ubuntu DVD deletes all data on the hard drive.

 **NOTE:** Your computer may or may not have an optical drive. Use an external optical drive or any external storage device for the procedures that involve media.

Use the *Ubuntu* DVD that shipped with your computer to reinstall your operating system.

To reinstall the operating system:


1. Turn off the computer.
2. Connect an external USB optical drive into an available USB connector on your computer.

 **CAUTION:** Using the Ubuntu DVD deletes all data on the hard drive.

3. Insert the *Ubuntu* DVD in the external USB optical drive.

4. Turn on the computer.

5. When the DELL logo appears, press <F12> immediately.

 **NOTE:** The following steps will change the boot sequence. The next time your computer boots, the boot sequence will be based on devices specified in the System Setup program.

6. When the boot device list appears, highlight **CD/DVD/CD-RW** and press <Enter>.

7. Press any key to **Boot from CD-ROM**. Follow the instructions on the screen to complete the installation.



Printed in China.

Printed on recycled paper.

[www.dell.com](http://www.dell.com) | [support.dell.com](http://support.dell.com)



OVMODJA00